

Flat Rock Park

Saratoga Springs, NY

7.17.2018

Existing Site - Aerial



Historic Images

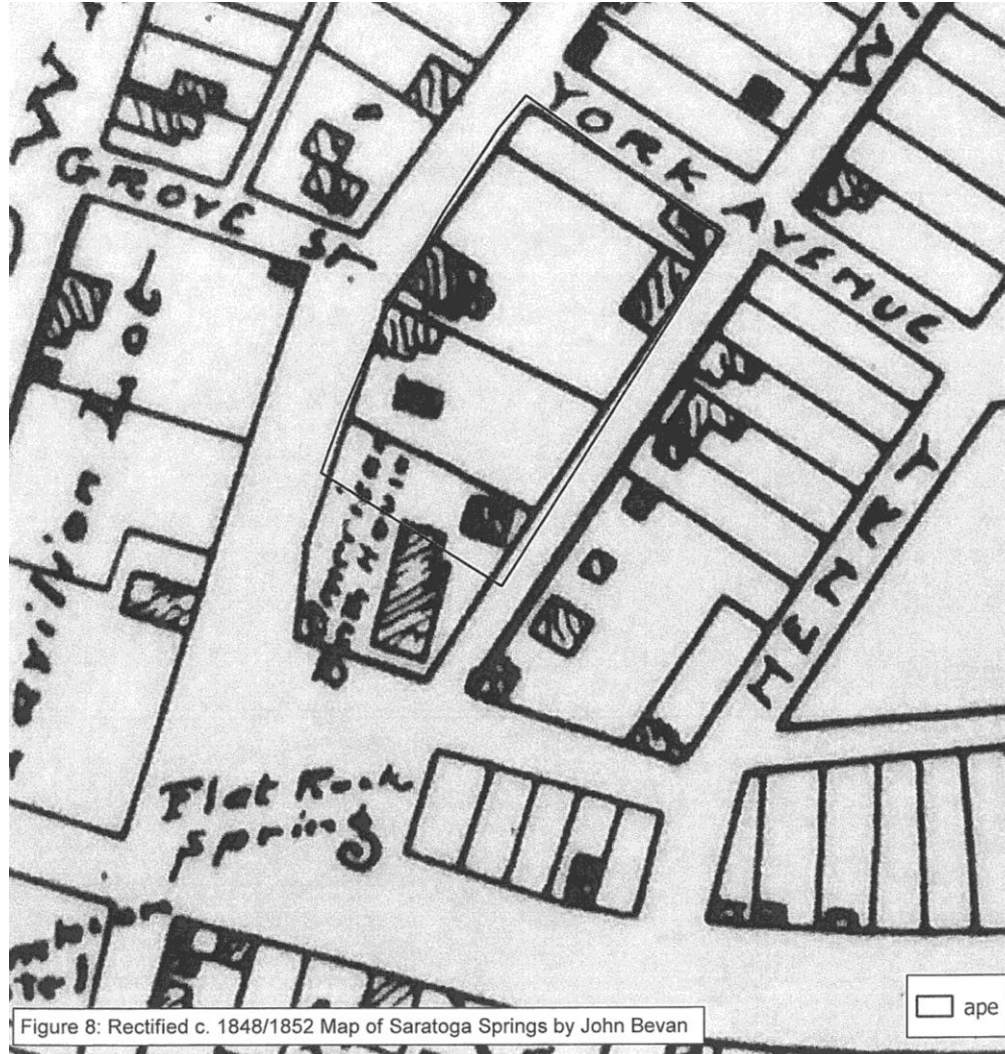


Historic Images

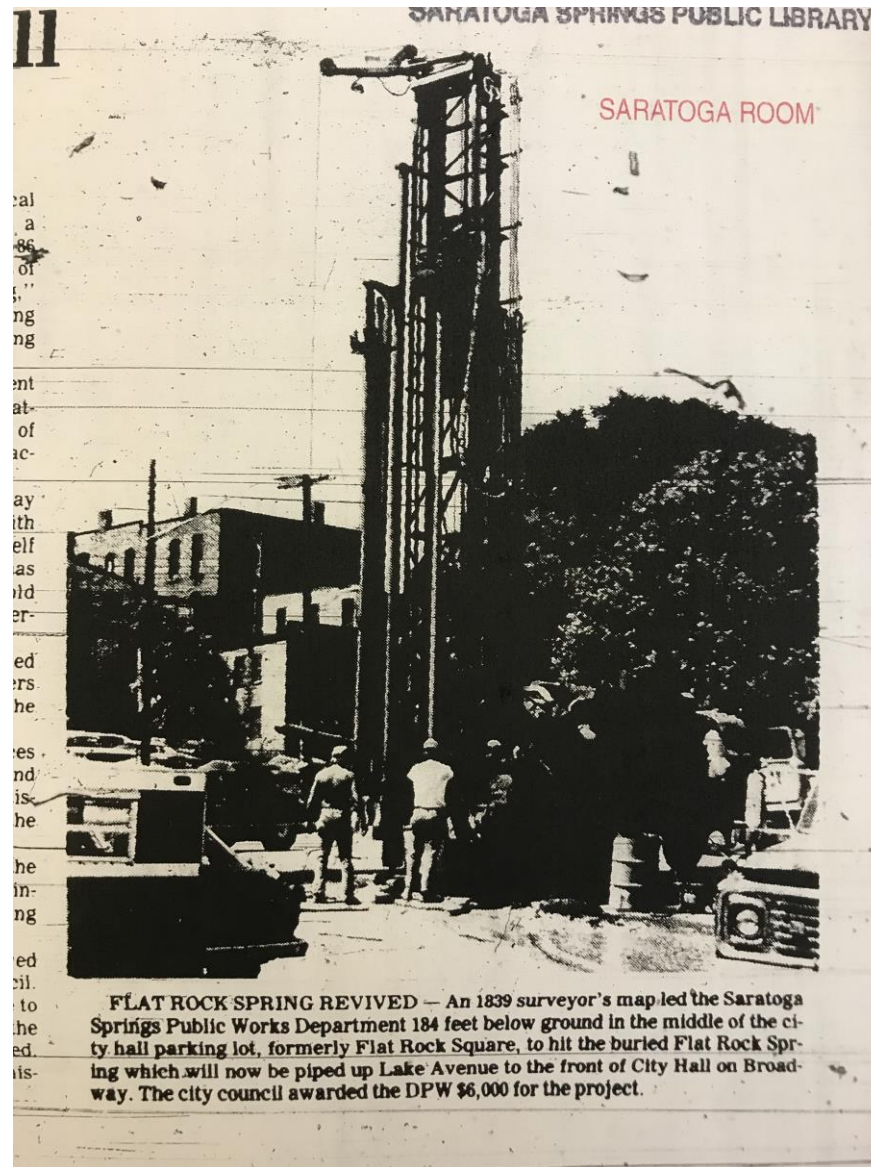


c. 1963

Historic Images



Historic Images



Historic Images

Tri-County News Friday, June 23, 1978 -- 3A

**man dies
ele crash**

id Ballston, Spa
a fractured skull
night last night
ammed into a
ed Sea Garden
29, spun around
The driver was
wreckage and
a tree, Saratoga
ad.

Thomas E. Ebbert of
St. was driving
29 the accident
11:41 p.m.
cribed as dead on
ga Hospital. He
by the Saratoga
s. Investigating
Ronald Lee and

**oman, 31.
d suicide**

Wilton woman ap-
mitted suicide
noon Thursday by
l in her car into
run a vacuum hose
st pipe. Her body
le the auto, which
inside the garage
left running.

e S. Riccardo of 15
e RD2 Wilton. Her
overed by mem-
lton Fire Co. who
fire in Riccardo's
ties said that the
apparently over-
a fire which par-
er vehicle and the
garage. Authori-
ghor spotted the

County Coroner
k ruled death was
but withheld the
pending an au-
ating were Investi-
DeMartino and

**Hearin
Joe
by**

Joey Hofbauer u
examination by
cians this morning
hearing on the bo
has been recessed
the examination at
While Assistant
Douglas McGivney
ing Saratoga Coun
N. Brown Thursd
oratory tests mig
until Wednesday.
ratories should b
the tests by Mond

McGivney is r
departments of F
vices in their sit
Rodgkin's Disceas
tional therapy.

The state's cas
fits of chemother
and the alleged d
of Laetrile-based
ended Wednesday
mony of the phy
the boy this morn

The proponents
its safety and be
Thursday.

Today's exam
last approximal
place in the a
Schachter the N
ing Joes with n
Laetrile. The
blood and urine
boy's vital sign

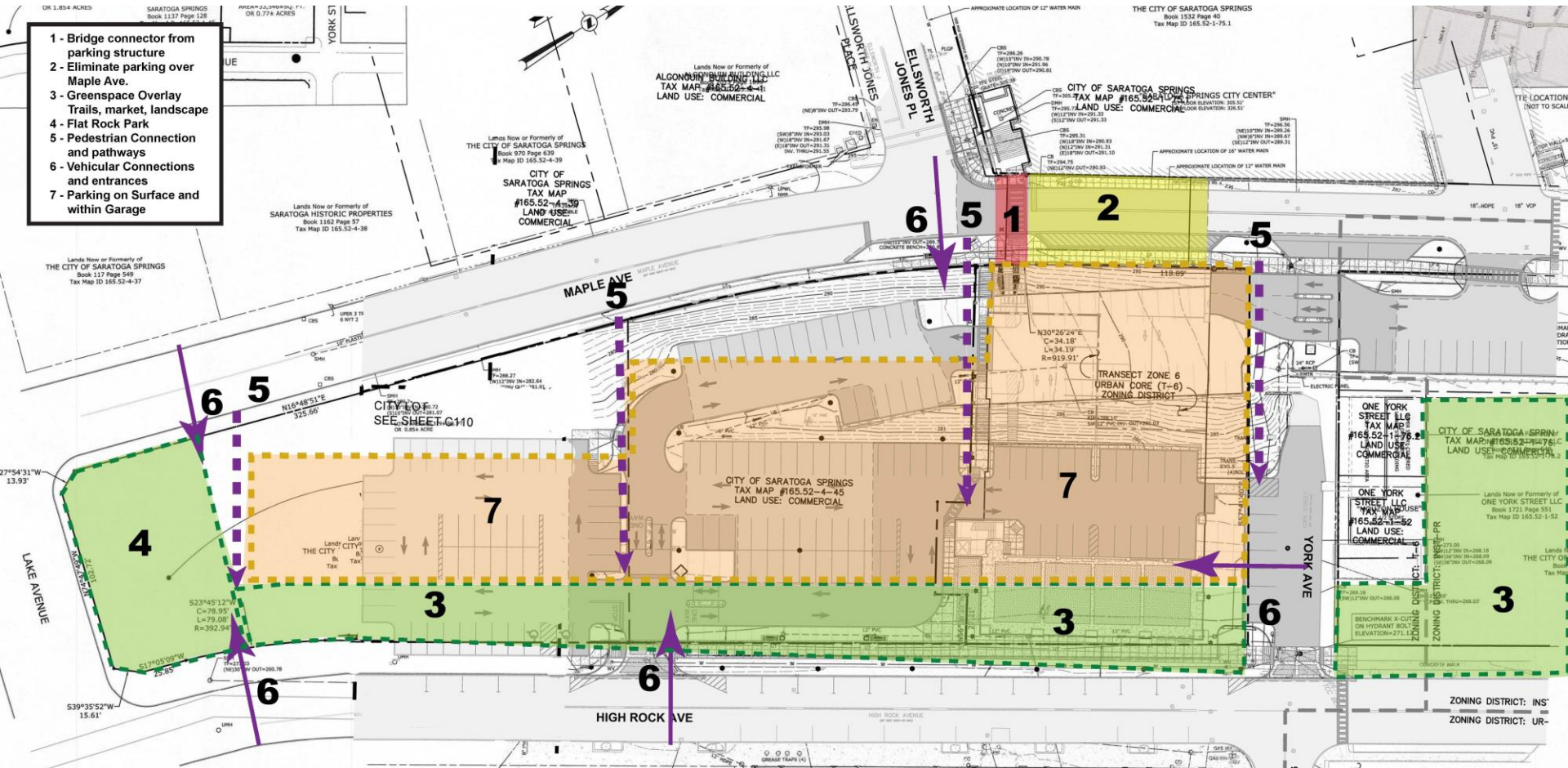
FLAT ROCK LINE—Plastic pipe, not a railroad, will run from the recently tapped Flat Rock Spring below the city parking lot on Maple Avenue. The pipe will be buried in the trench seen here, run through City Hall and be hooked up to a fountain that will be built on Broadway.

New bar, restaurant

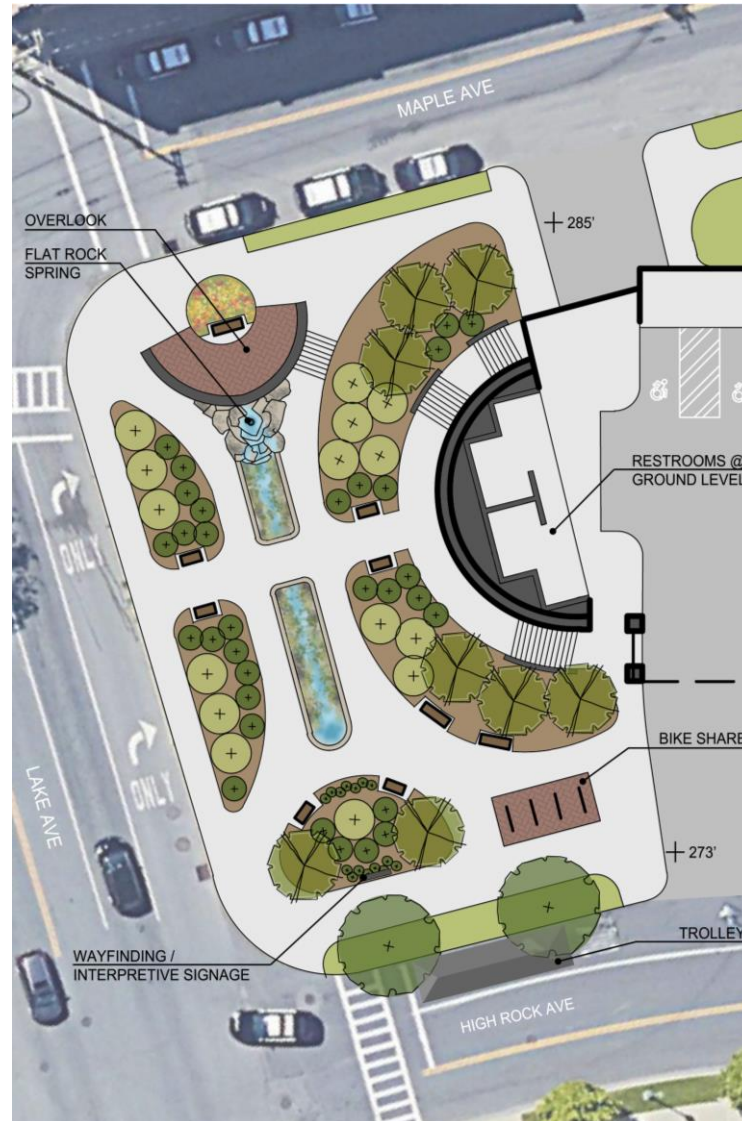
Spa zoners okay 3 busin

Programming

- 1 - Bridge connector from parking structure
- 2 - Eliminate parking over Maple Ave.
- 3 - Greenspace Overlay Trails, market, landscape
- 4 - Flat Rock Park
- 5 - Pedestrian Connection and pathways
- 6 - Vehicular Connections and entrances
- 7 - Parking on Surface and within Garage



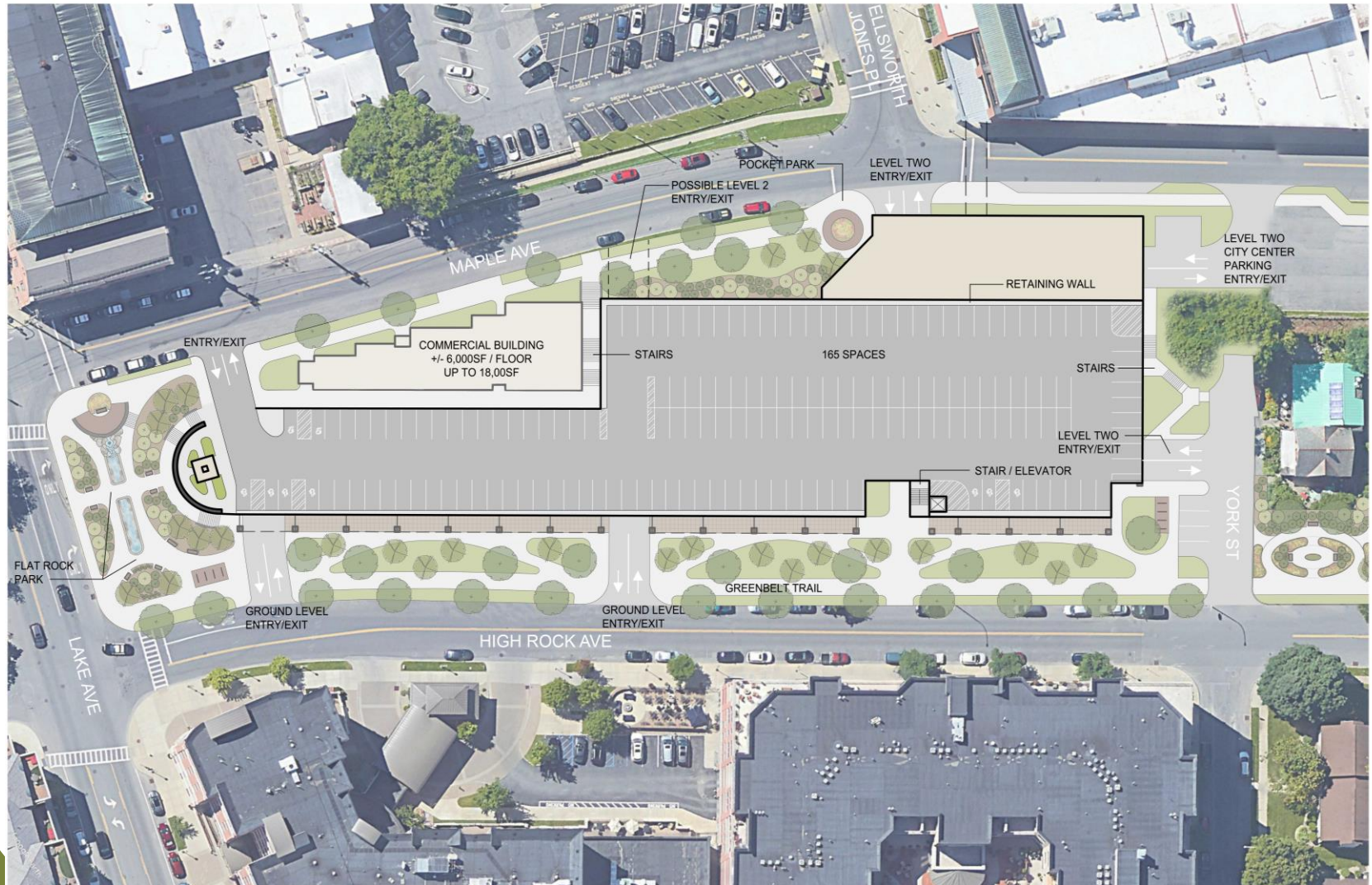
Park Enlargement



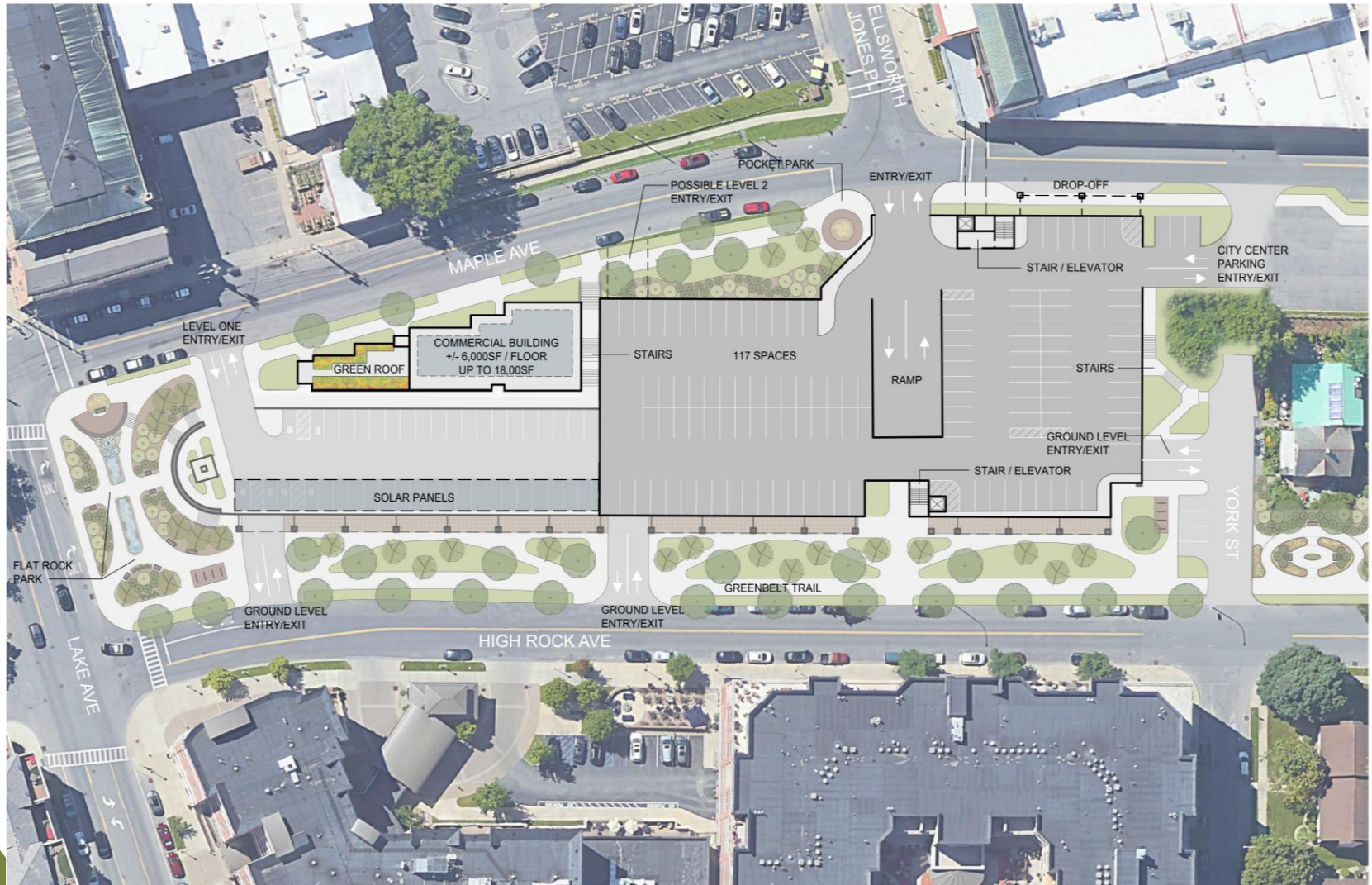
Ground Level Site Plan



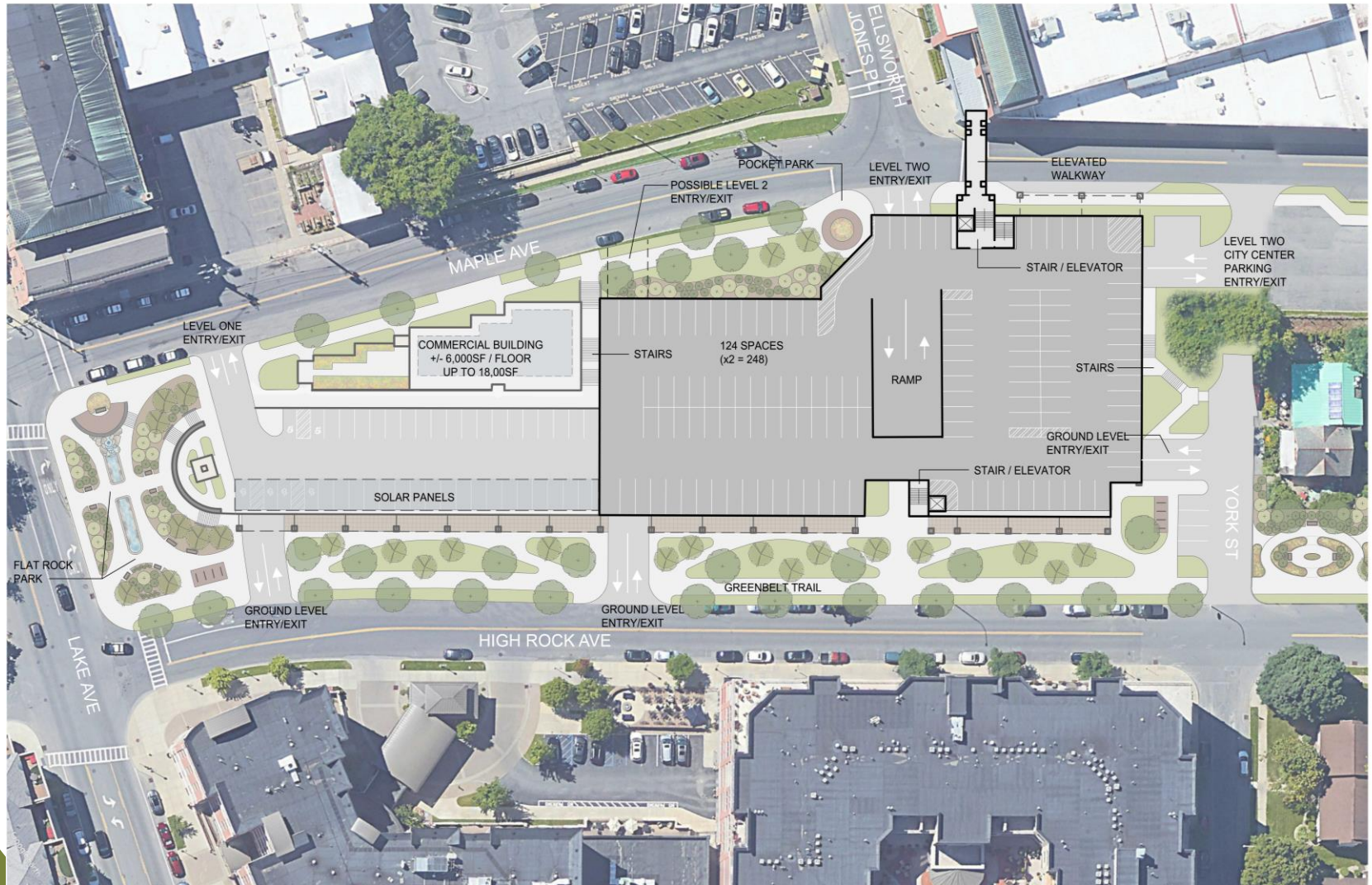
Floor Plan – Level One



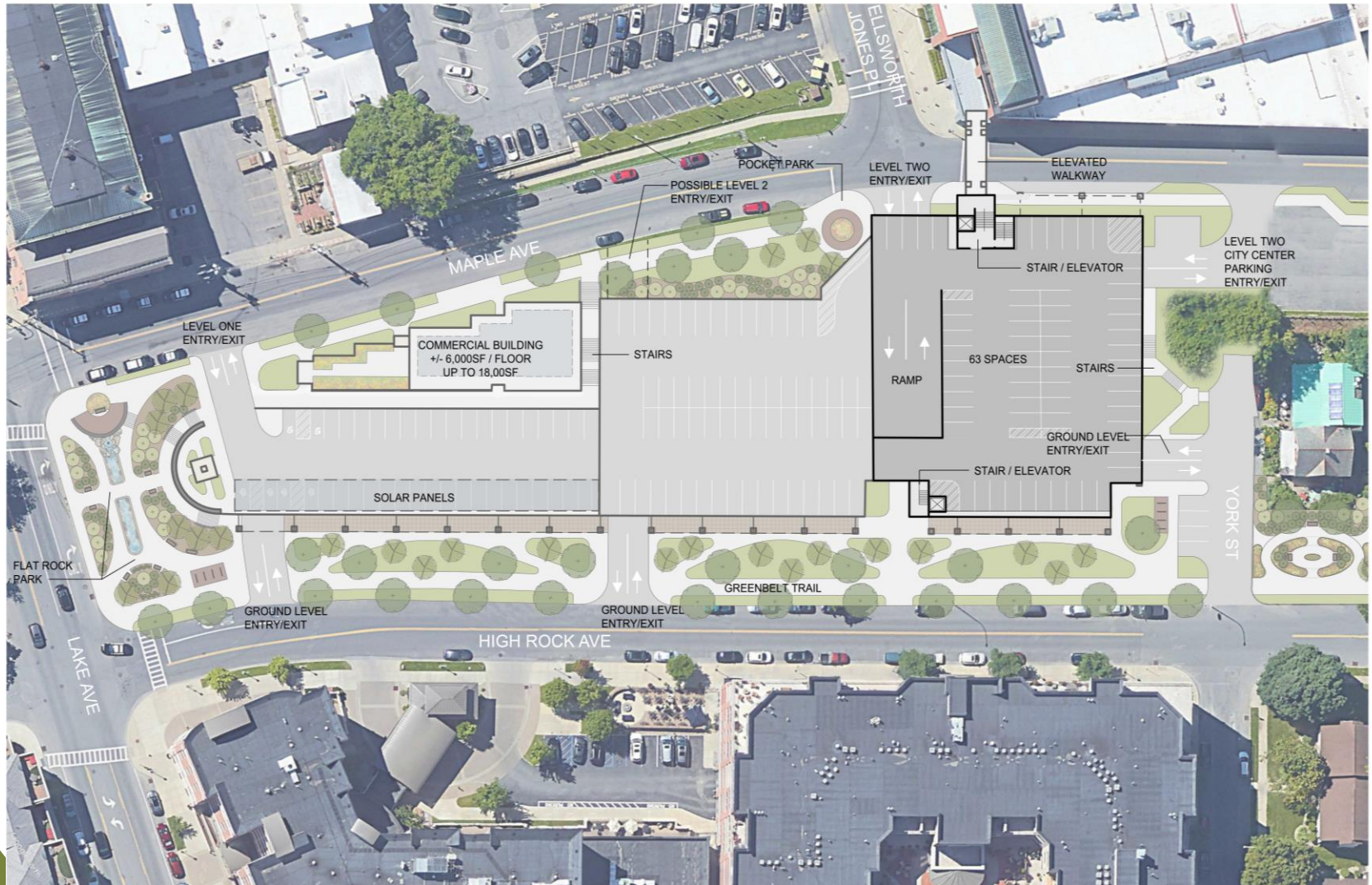
Floor Plan – Level Two



Floor Plan – Level Three & Four



Floor Plan – Level Five



Parking Garage Diagram



Elevations



West Elevation



East Elevation

Renderings



View from the West, Over City Hall

The LA GROUP

Renderings



View Looking N.W. from the Corner of Lake Ave and High Rock Ave

The LA GROUP