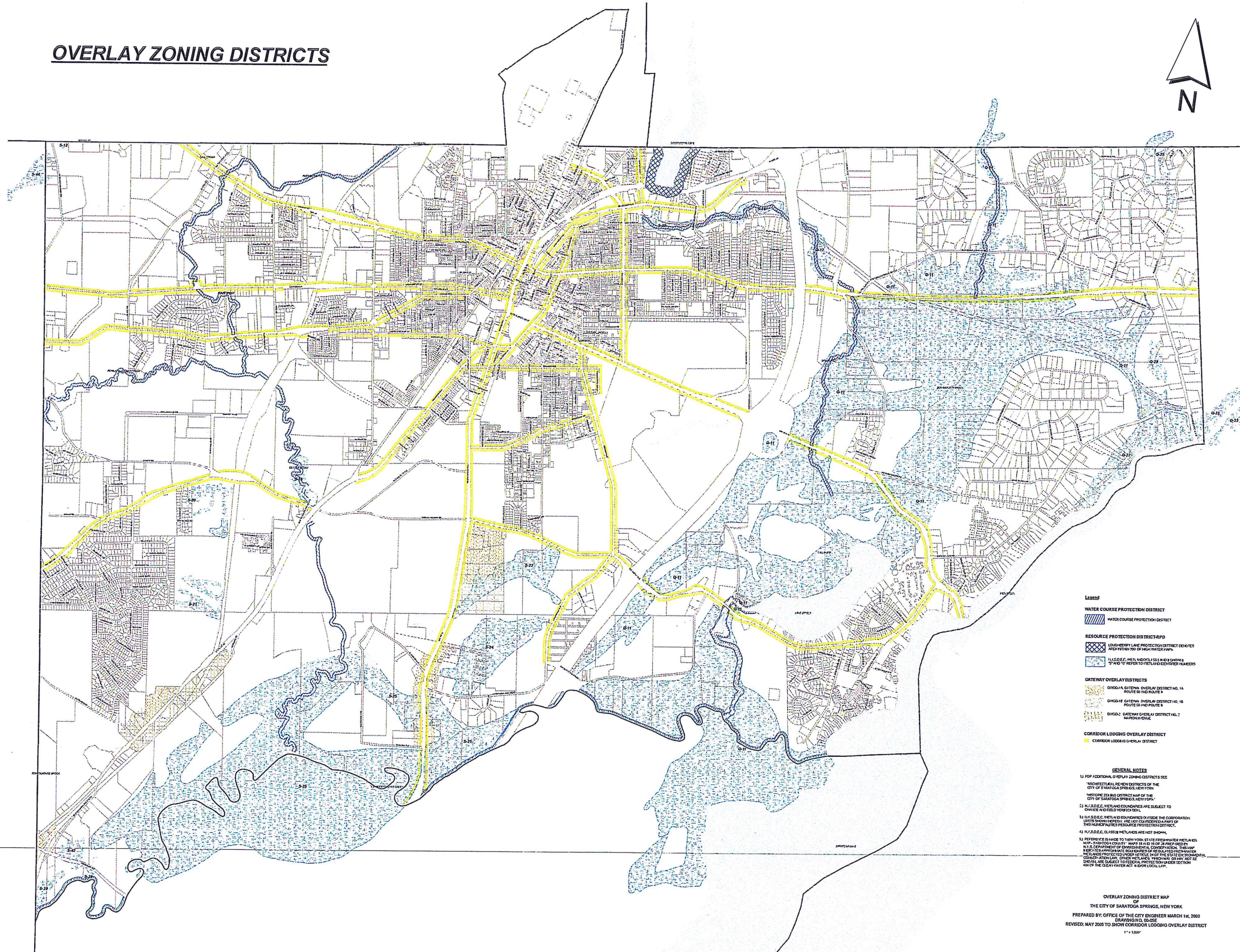


# OVERLAY ZONING DISTRICTS



- LEGEND**
- WATER COURSE PROTECTION DISTRICT**  
 WATER COURSE PROTECTION DISTRICT
  - RESOURCE PROTECTION DISTRICT-RPD**  
 RESOURCE PROTECTION DISTRICT-RPD  
LOW-WATERP LANE PROTECTION DISTRICT DENOTES AREA WITHIN 200' OF HIGH WATER MARK.  
 11,222.F.F. WETLANDS AND 11,222.F.F. 2' BAND OF WETLANDS AND 11,222.F.F. 2' BAND OF WETLANDS
  - GATEWAY OVERLAY DISTRICTS**  
 D100-1A GATEWAY OVERLAY DISTRICT NO. 1A ROUTE 50 AND ROUTE 5  
 D100-1B GATEWAY OVERLAY DISTRICT NO. 1B ROUTE 50 AND ROUTE 5  
 D100-2 GATEWAY OVERLAY DISTRICT NO. 2 HUDSON VALLEY
  - CORRIDOR LODGING OVERLAY DISTRICT**  
 CORRIDOR LODGING OVERLAY DISTRICT

- GENERAL NOTES**
- 1) FOR ADDITIONAL OVERLAY ZONING DISTRICTS SEE "ARCHITECTURAL REVIEW DISTRICTS OF THE CITY OF SARATOGA SPRINGS, NEW YORK."
  - 2) "WETLANDS AND OTHER WATERS OF THE CITY OF SARATOGA SPRINGS, NEW YORK."
  - 3) N.Y.S.D.E.C. WETLAND BOUNDARIES ARE SUBJECT TO CHANGE BASED ON REVISIONS.
  - 4) N.Y.S.D.E.C. WETLAND BOUNDARIES OUTSIDE THE CORPORATION LIMITS SHOWN HEREIN ARE NOT CONSIDERED A PART OF THIS MAP UNLESS RESOURCE PROTECTION DISTRICT.
  - 5) N.Y.S.D.E.C. CLASS II WETLANDS ARE NOT SHOWN.
  - 6) PREFERENCE IS MADE TO NEW YORK STATE FRESHWATER WETLANDS MAP, SARATOGA COUNTY, MAPS 89-0113-1 OF 2 PREPARED BY N.Y.S. DEPARTMENT OF ENVIRONMENTAL CONSERVATION. THIS MAP IS NOT A SUBSTITUTE FOR THE FEDERAL WETLANDS PROTECTION ACT OR THE STATE ENVIRONMENTAL CONSERVATION LAW. OTHER WETLANDS WHICH MAY QUALIFY AND BE SUBJECT TO FEDERAL PROTECTION UNDER SECTION 404 OF THE CLEAN WATER ACT & 401 OF THE CWA.

OVERLAY ZONING DISTRICT MAP  
 OF  
 THE CITY OF SARATOGA SPRINGS, NEW YORK  
 PREPARED BY: OFFICE OF THE CITY ENGINEER MARCH 14, 2000  
 DRAWING NO. 00-02E  
 REVISED: MAY 2005 TO SHOW CORRIDOR LODGING OVERLAY DISTRICT  
 1" = 1,000'