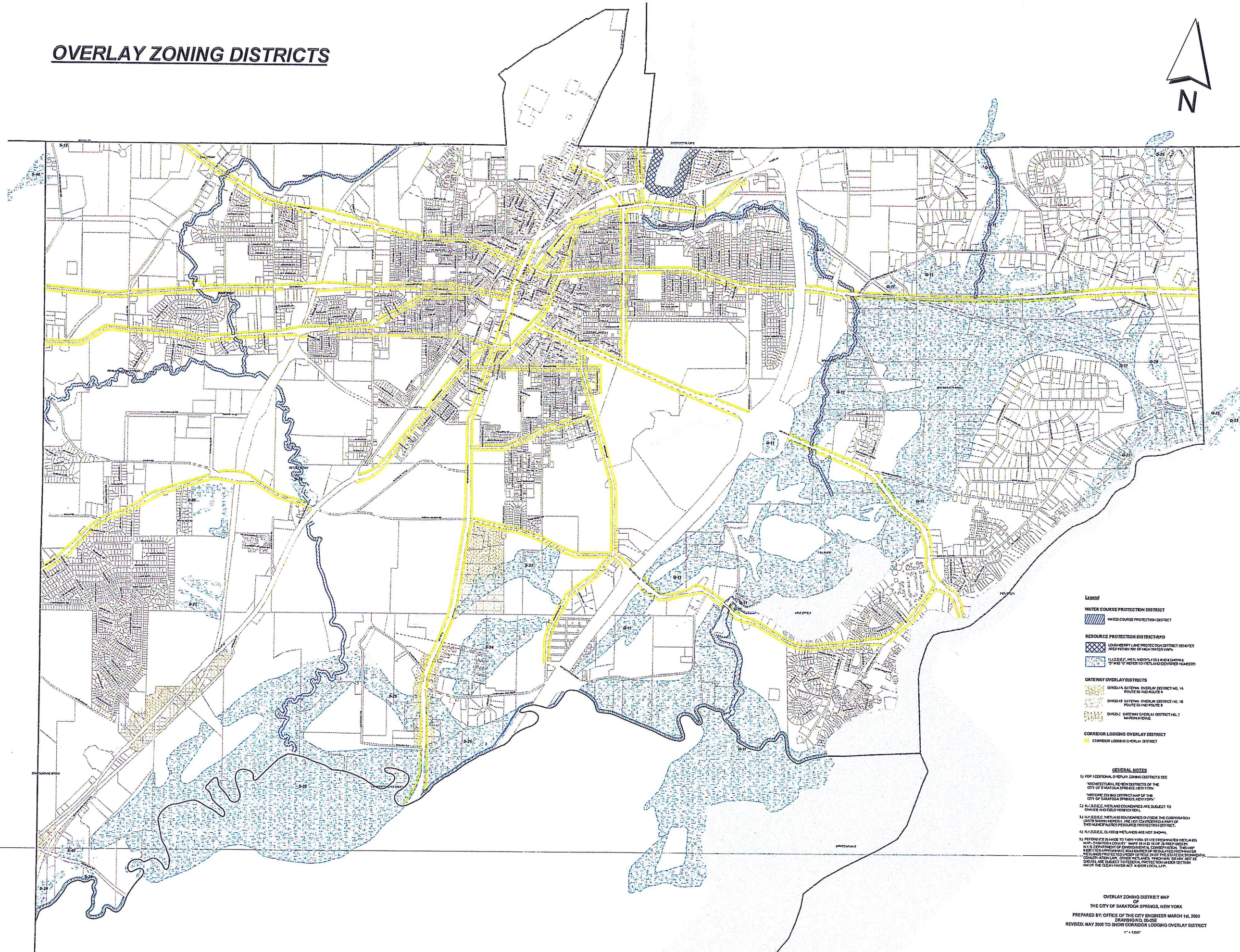


# OVERLAY ZONING DISTRICTS



- LEGEND**
- WATER COURSE PROTECTION DISTRICT**  
 WATER COURSE PROTECTION DISTRICT
  - RESOURCE PROTECTION DISTRICT-RPD**  
 LOW-SLOPE LANE PROTECTION DISTRICT DENOTES AREA WITHIN 500' OF HIGH WATER MARK.  
 FLUDDLE, WETLANDS AND SLOPES 2' AND GREATER TO WETLANDS AND SLOPES
  - GATEWAY OVERLAY DISTRICTS**  
 D100-1A GATEWAY OVERLAY DISTRICT NO. 1A ROUTE 50 AND ROUTE 5  
 D100-1B GATEWAY OVERLAY DISTRICT NO. 1B ROUTE 50 AND ROUTE 5  
 D100-2 GATEWAY OVERLAY DISTRICT NO. 2 HUDSON AVENUE
  - CORRIDOR LODGING OVERLAY DISTRICT**  
 CORRIDOR LODGING OVERLAY DISTRICT

- GENERAL NOTES**
- 1) FOR ADDITIONAL OVERLAY ZONING DISTRICTS SEE "ARCHITECTURAL REVIEW DISTRICTS OF THE CITY OF SARATOGA SPRINGS, NEW YORK."
  - 2) "WETLANDS AND SLOPES" MAP OF THE CITY OF SARATOGA SPRINGS, NEW YORK.
  - 3) N.Y.S.D.E.C. WETLAND BOUNDARIES ARE SUBJECT TO CHANGE AND FIELD INSPECTION.
  - 4) N.Y.S.D.E.C. WETLAND BOUNDARIES OUTSIDE THE CORPORATION LIMITS SHOWN HEREIN ARE NOT CONSIDERED A PART OF THIS MAP AND ARE SUBJECT TO FIELD INSPECTION.
  - 5) N.Y.S.D.E.C. CLASS II WETLANDS ARE NOT SHOWN.
  - 6) PREFERENCE IS MADE TO NEW YORK STATE FRESHWATER WETLANDS AND "SARATOGA COUNTY" MAPS BY 10/13/04 AS PREPARED BY N.Y.S. DEPARTMENT OF ENVIRONMENTAL CONSERVATION. THESE MAPS SUPERSEDE ALL OTHERS OF RECORD FOR WETLANDS PROTECTED UNDER ARTICLE 14 OF THE STATE ENVIRONMENTAL CONSERVATION LAW. OTHER WETLANDS WHICH MAY EXIST AND BE SUBJECT TO FEDERAL PROTECTION UNDER SECTION 404 OF THE CLEAN WATER ACT & 401 OF THE CWA.

OVERLAY ZONING DISTRICT MAP  
 OF  
 THE CITY OF SARATOGA SPRINGS, NEW YORK  
 PREPARED BY: OFFICE OF THE CITY ENGINEER MARCH 14, 2000  
 DRAWING NO. 00-05E  
 REVISED: MAY 2005 TO SHOW CORRIDOR LODGING OVERLAY DISTRICT  
 1" = 1,000'