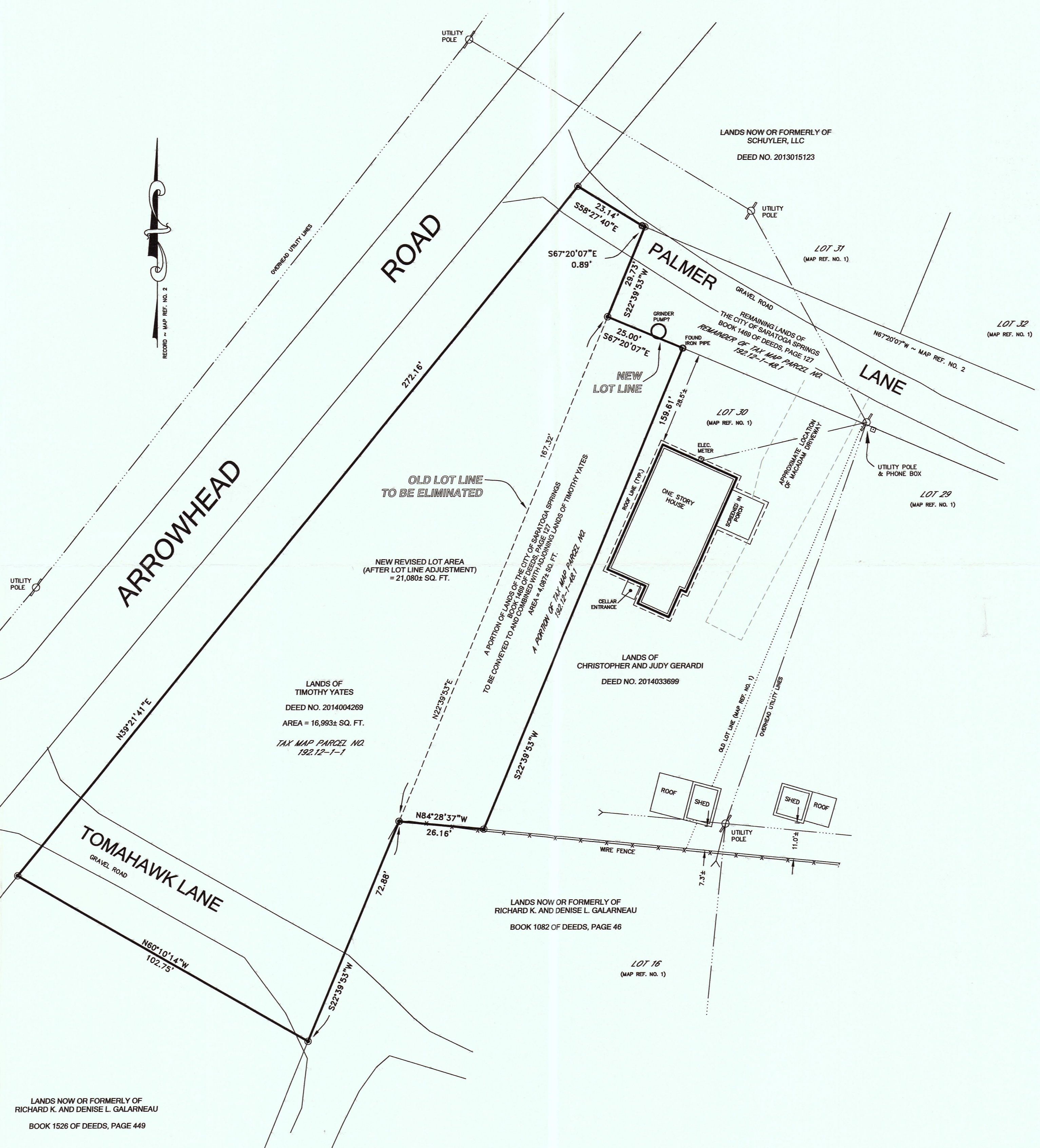


SITE LOCATION MAP
NOT TO SCALE



ZONING DISTRICT: SR-2
 MINIMUM LOT SIZE: 20,000 SQ. FT.
 MINIMUM MEAN LOT WIDTH: 100 FT.
 MAXIMUM PERCENT OF LOT TO BE OCCUPIED BY:
 PRINCIPAL BUILDING: 25 %
 ACCESSORY BUILDING: 8%
 MINIMUM YARD DIMENSIONS:
 FRONT: 30 FT.
 REAR: 30 FT.
 ONE SIDE: 12 FT.
 TOTAL SIDE: 30 FT.
 PRINCIPAL BUILDING:
 MAXIMUM BUILDING HEIGHT: 35 FT.
 MINIMUM DISTANCE FROM ACCESSORY BUILDING TO:
 PRINCIPAL BUILDING: 5 FT.
 FRONT LOT LINE: 30 FT.
 SIDE LOT LINE: 5 FT.
 REAR LOT LINE: 5 FT.
 MINIMUM PERCENT OF LOT TO BE PERMEABLE: 30%

MAP REFERENCES:

- 1.) MAP ENTITLED "HUDSON VALLEY RAILWAY COMPANY, MAP SHOWING LAND AND SUBDIVISION OF PORTION OF THE LAND", DATED JANUARY, 22, 1923 AND FILED IN THE SARATOGA COUNTY CLERK'S OFFICE AS MAP NO. "CC-83".
- 2.) MAP ENTITLED "SURVEY MAP SHOWING LOT LINE ADJUSTMENT BETWEEN LANDS OF DAVID SCRIPTER & SUSAN K. BUTLER AND LANDS OF THE CITY OF SARATOGA SPRINGS", DATED JULY 29, 2011, LAST REVISED ON SEPTEMBER 3, 2012, MADE BY SANTO ASSOCIATES AND FILED IN THE SARATOGA COUNTY CLERK'S OFFICE AS MAP NO. 2012189.

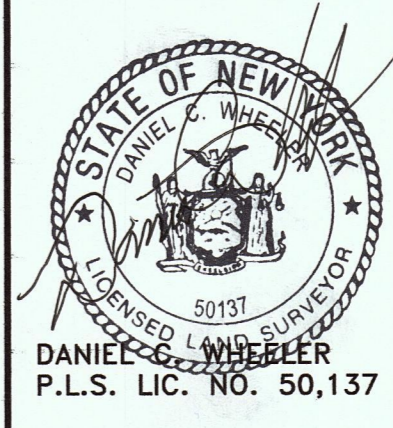
DEED REFERENCES:

- 1.) DEED DATED AUGUST 22, 1997 FROM KENNETH KLOTZ AS COMMISSIONER OF FINANCE OF THE CITY OF SARATOGA SPRINGS TO THE CITY OF SARATOGA SPRINGS AND RECORDED IN THE SARATOGA COUNTY CLERK'S OFFICE IN BOOK 1469 OF DEEDS AT PAGE 127.
- 2.) DEED DATED DECEMBER 18, 2013 FROM DEUTSCHE BANK NATIONAL TRUST COMPANY, TRUSTEE TO TIMOTHY YATES AND RECORDED IN THE SARATOGA COUNTY CLERK'S OFFICE AS DEED NO. 2014004269.

NOTE:

- 1.) THIS SURVEY WAS DONE WITHOUT THE BENEFIT OF AN ABSTRACT OF TITLE OR A TITLE REPORT.

UNAUTHORIZED ALTERATION OR ADDITION TO THIS MAP IS A VIOLATION OF ARTICLE 145, SECTION 7209, SUB-PARAGRAPH (2) OF THE NEW YORK STATE EDUCATION LAW.



SURVEY DANIEL C. WHEELER, L.S.
ASSOCIATES, LLC
 PROFESSIONAL LAND SURVEYING

432 BROADWAY, SUITE 5, SARATOGA SPRINGS, NY 12866
 PH. (518) 583-7302 FAX (518) 583-7303

TITLE:
**LOT LINE ADJUSTMENT MAP
 LANDS OF TIMOTHY YATES AND
 A PORTION OF LANDS OF
 THE CITY OF SARATOGA SPRINGS**

LOCATION: SARATOGA SPRINGS (O.D.)
 SARATOGA COUNTY, NEW YORK
 DATE: AUGUST 30, 2015
 SCALE: 1 INCH = 20 FEET
 MAP NO. 2015-14-03